



CENTRAL CALIFORNIA
ENVIRONMENTAL JUSTICE NETWORK

From the Ground Up- *An Environmental Justice Approach to Community Science and Air Monitoring. CCEJN's monitoring experience in Kern County*

Gustavo Aguirre Jr
Bakersfield, California

Outline:

- Overview of CCEJN and Geolocation
- Background of local environmental justice projects
- Why Community Science & Air Monitoring
- Communities perspective
- Questions?

CCEJN Mission Statement...

Our goals are to preserve our natural resources now and in the future, by seeking better ways to minimize or eliminate environmental degradation in Central Valley communities...

- Kern County:
- Is located in the Southern end of the San Joaquin Valley
- The county's economy is heavily linked to agriculture and to petroleum extraction
- Suffers from poor air quality. The Bakersfield area is the most polluted basin in the US
- Bakersfield ranks first for PM_{2.5}
- and second for ozone

CCEJN Background



Arvin Air Quality Project.

ARVIN, CA – Among the Worst Air Pollution in the USA

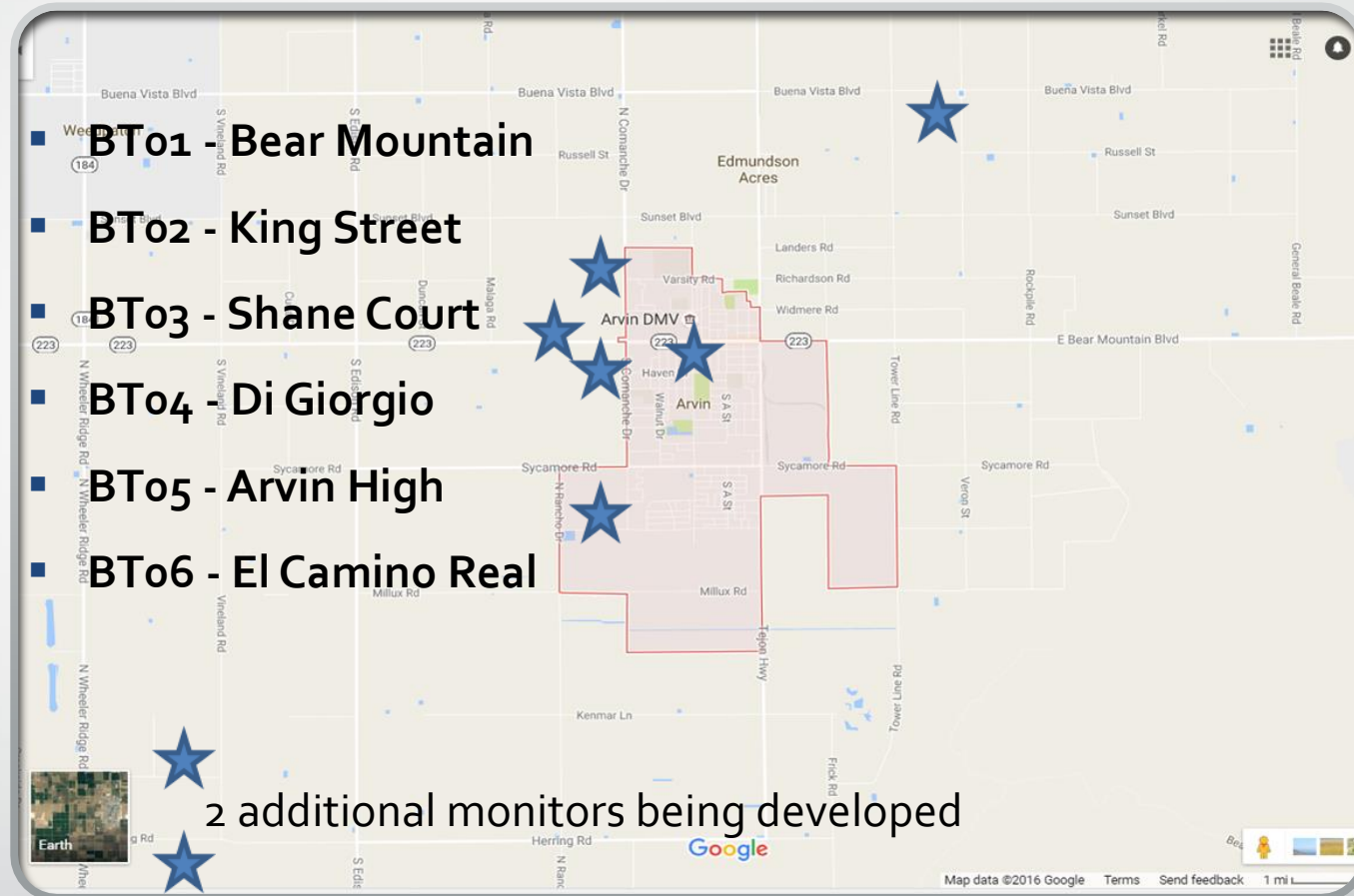
SOURCES OF AIR POLLUTION:

* Oil Field & Industrial Operations

* Pipeline & Storage Tank Leaks

* Agricultural Pollutants – Pesticides, Herbicides, Fungicides, etc.

* Vehicle Emissions: Passenger & Diesel Pollution



Source: <http://www.arvinairquality.com/>

Source: <https://siteportal.calepa.ca.gov/nsite/>; <http://bakersfieldnow.com/news/local/state-fines-bakersfield-company-75k-for-gas-leak-that-displaced-arvin-families>; http://www.cdpr.ca.gov/docs/emon/airinit/op_recommendation_final.pdf; http://www.lung.org/local-content/california/documents/state-of-the-air/2017/sota-2017_ca_san-joaquin-fact.pdf;

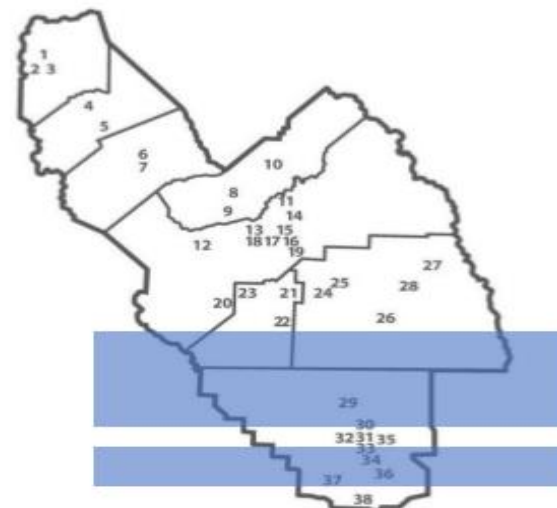
Partners in Action:

- Using the lens of Environmental Justice & through a collaborative approach to community empowerment, these partners came together to bring resource to the community to shed light on the needs of regulatory gaps at the community level.
- This was not a Top Down approach for community participation but rather a true grassroots community led effort.



Why Community Science & Air Monitoring

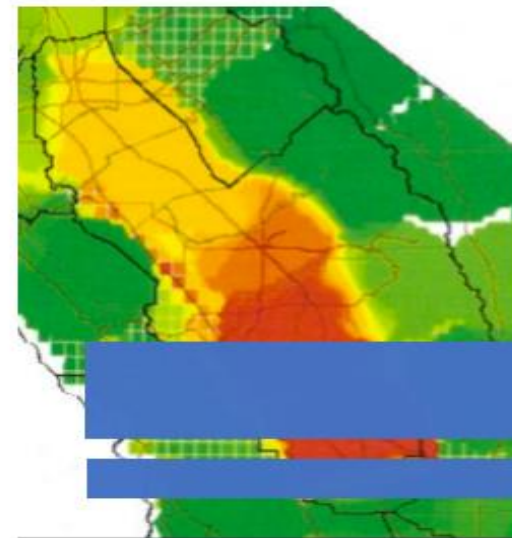
PM2.5 Monitoring Needs in the San Joaquin Valley



As of July 2017

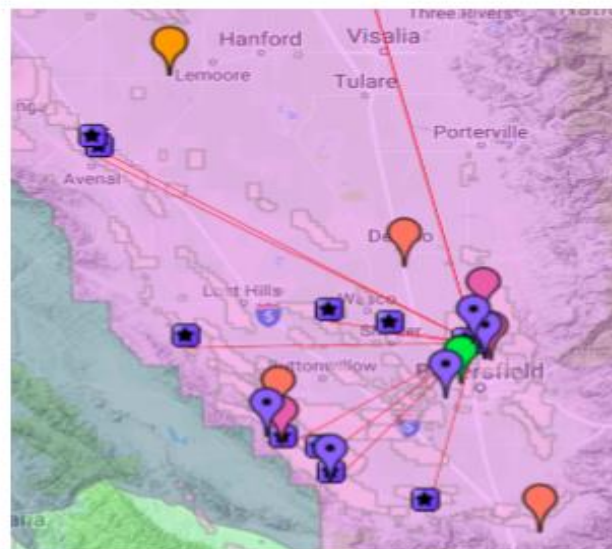
Blue boxes represent areas where there are no PM2.5 monitors

Source of underlying map: SJVUAPCD Draft 2017 Air Monitoring Network Plan



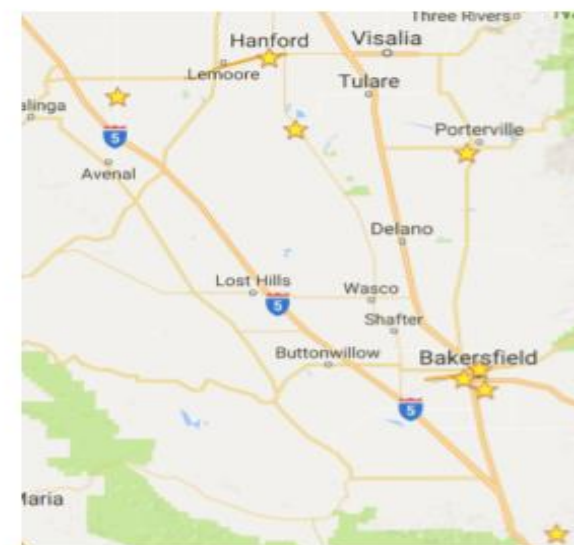
Map of highest concentrations of PM2.5

Source of underlying map: CARB Workshop, Meeting PM2.5 Standards in the San Joaquin Valley, Fresno, California, December 1, 2016



Largest stationary sources of PM2.5 pollution
(purple markers represent oil and gas facilities)

Source: CARB Pollution Mapping Tool (ver 1.1)



Location of PM2.5 Monitors

Sources: SJVUAPCD Draft 2017 Air Monitoring Network Plan and Google Maps



Division of Oil, Gas & Geothermal Resources - Well Finder

Find By Location

Find My Current Location

or

Street:

City:

Zip:

Display a

Buffer radius is limited to 10 mi (52800ft).

Find By API

Find By Lat, Long

Find By PLSS

Find By Oil/Gas Field

Data (Layers):

Notices & Permits

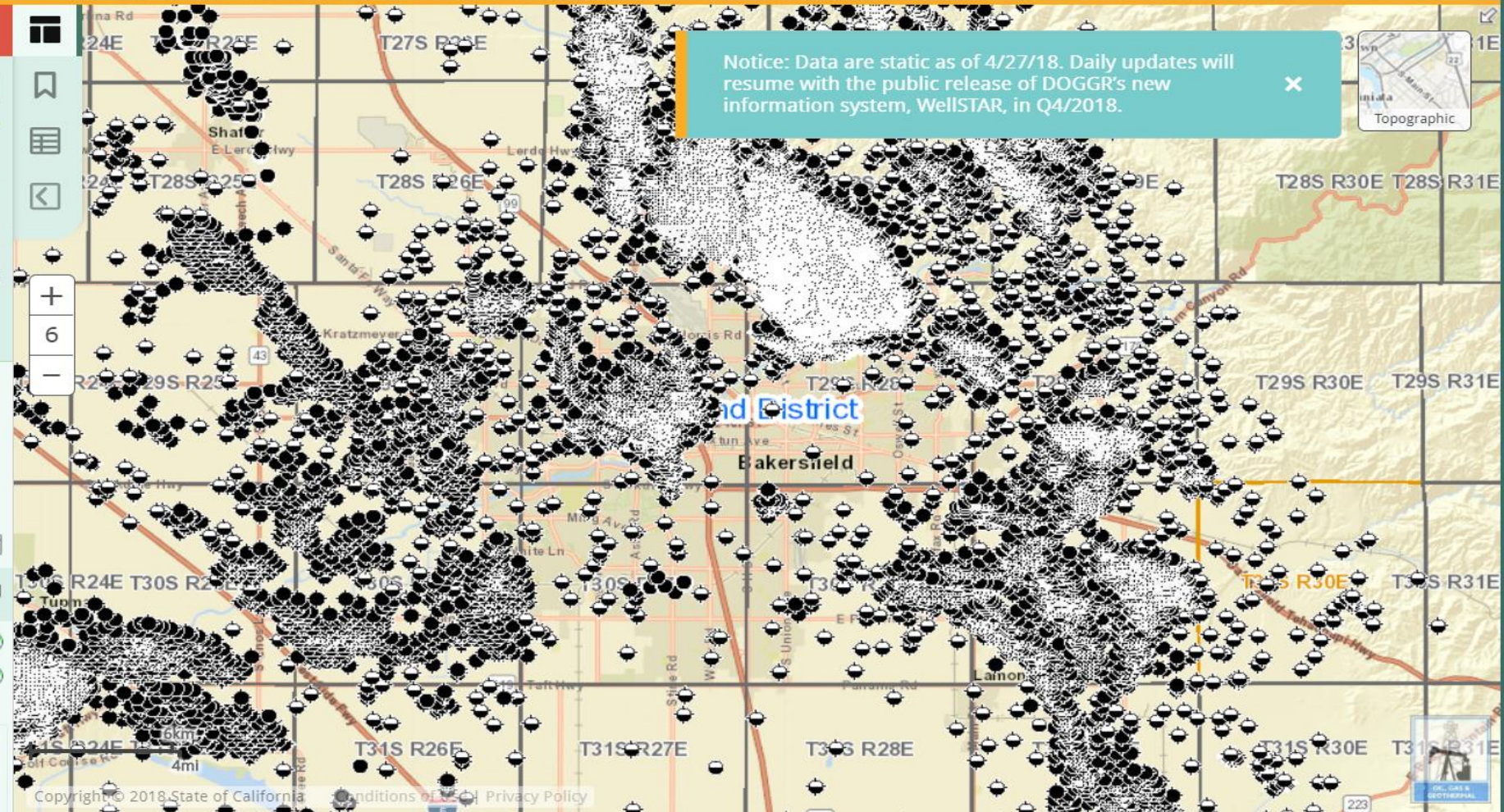
DOGGR Wells

Label: API# Well# Detailed

EPA Wells for Aquifer Exemption Review

Enhanced Oil Recovery Wells

Disposal Wells

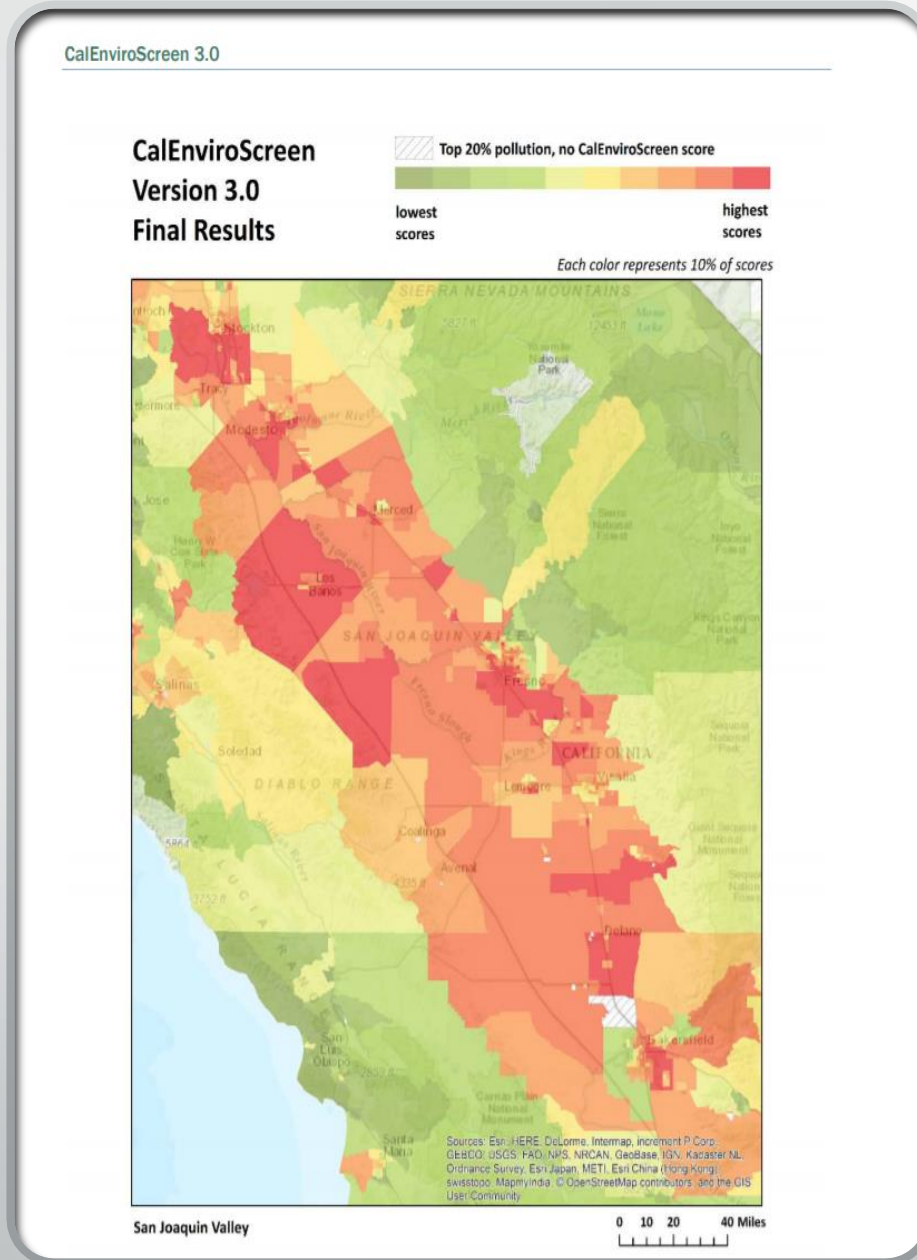


• Source:

<http://www.conservation.ca.gov/doggr/Pages/WellFinder.aspx>

Community Perspectives

Who represents us?



✕ ⓘ Governing Board Roster
www.valleyair.org

	Chair Supervisor Buddy Mendes Fresno County 2281 Tulare Street Fresno, CA 93721 (559) 600-4000		Mayor David Ayers City of Hanford 315 N. Duty Street Hanford, CA 93230 (559) 585-2500
	Vice Chair Supervisor J. Steven Worthley Tulare County 2800 W Burrel Visalia, CA 93291 (559) 733-6271		John A. Capitman, Ph.D. Executive Director, Central Valley Health Policy Institute 1625 E. Shaw Ave, #146 Fresno, CA 93710 (559) 228-2157
	Councilmember Drew M. Bessinger City of Clovis 1033 5th Street Clovis, CA 93612 (559)324-2060		Supervisor Bob Elliott San Joaquin County 44 N. San Joaquin Street, Suite 627 Stockton, CA 95202 (209)468-3113
	Supervisor David Couch Kern County 1115 Truxtun Avenue Bakersfield, CA 93301 661-868-3680		Supervisor Kristin Olsen Stanislaus County 1010 10th Street, Suite 6500 Modesto, CA 95354 (209) 525-4440
	Councilmember Christina Fugazi City of Stockton 425 N. El Dorado Street Stockton, CA 95202 (209) 937-7121		Supervisor Craig Pedersen Kings County 1400 W. Lacey Blvd Hanford, CA 93230 (559) 852-2362
	Supervisor Lloyd Pareira Merced County 2222 M Street Merced, CA 95340 (209) 385-7434		Alexander C. Sherriffs, M.D. Adventist Health Community Care 119 South 6th Street Fowler, CA 93625 (559) 834-1614
	Councilmember Monte Reyes City of Porterville 291 N. Main Porterville, CA 93257 (559) 782-7464		Mayor Chris Vierra City of Ceres 2720 Second Street Ceres, CA 95307 (209) 538-5731
	Supervisor Tom Wheeler Madera County 209 W. Yosemite Avenue Madera, CA 93637 (559) 675-7700		

GENERAL FEEDBACK

© Copyright 2006-2012



“At the end of the day, people and communities need to take back the science. Can we really trust special interest to model or forecast our air quality? We know government knows our air quality, we know the polluters know the pollution, we know the researchers know the science- the only left out are the people being affected by the actual pollution. We need to decolonize and democratize data and science in communities most effected. That is why community air monitoring is so important.



Source: <https://ccejn.wordpress.com/>

Questions or Comments?



Thank you.

- Gustavo Aguirre Jr.
- Kern County Coordinator
- Gustavo.aguirrejr@ccejn.org
- 559-907-2140